

## Comparison of Different Angular Measurements to Assess Sagittal Skeletal Discrepancy - A Cephalometric Study

### Abstract

**Introduction:** - An accurate evaluation of sagittal jaw relationship is important in orthodontic diagnosis and treatment planning. Numerous angular and linear measurements have been incorporated to assess the antero-posterior jaw discrepancy between maxilla and mandible so as to reach the correct diagnosis. So the purpose of this study is to compare ANB angle, Wits appraisal, Beta angle, YEN angle and W-angle used to measure antero-posterior dysplasia and to find out which is the most reliable amongst them.

**Material and Method:** - Sample comprised of 45 pre-treatment lateral cephalograms which were divided into 3 groups: Group I-Class I skeletal pattern (n=15), Group II- Class II skeletal pattern (n=15) and Group III - Class III skeletal pattern (n=15)

**Results:** - ANOVA analysis was performed and highly significant differences were found in Beta angle, Yen angle and W-angle in all the three Groups (Group I, Group II, and Group III).

**Conclusion:** - Thus it has been concluded from the study that Beta angle, Yen angle and W-angle are significant angles to assess the sagittal jaw relationship between maxilla and mandible.

### Key Words

Sagittal Discrepancy, Beta Angle, YEN Angle and W-Angle

### Introduction

The evaluation of sagittal jaw relationship between maxilla and mandible has been one of the major problem in the field of orthodontics, which is of prime importance in diagnosis and treatment planning. This is because of rotations of jaws during growth, vertical relationships between the jaws and reference planes, and a lack of validity of the various methods proposed for their evaluation<sup>1,2,3,4</sup>. Numerous angular and linear measurements have been incorporated to assess the sagittal discrepancy between maxilla and mandible into various cephalometric analyses which could help the clinician to establish the most appropriate treatment plan. Appraisal by linear measurements has distinct advantages over angular measurements in that there are fewer variables to effect their accuracy and there is less error of measurement.<sup>5</sup>

Downs<sup>6</sup> in 1948 introduced the A-B plane angle. Positive and negative signs were used to denote protrusion and retrusion of mandible. A few years later Riedel<sup>7</sup> in 1952 introduced ANB angle and it became the most commonly used

measurement since that time. However, both Down's and Riedel's methods are subject to error due to variations in the position of nasion which is not fixed during growth, and any displacement will directly affect the A-B plane angle and ANB angle.

As an alternative to ANB, Jacobson<sup>1</sup> in 1975 introduced Wits appraisal. It relates points A and B to the functional occlusal plane. The distance between the points of intersection AO and BO is measured to describe antero-posterior relationship. In females AO should coincide BO, whereas in males BO should be 1mm ahead of AO. Though Wits appraisal avoids point N, accurate identification of functional occlusal plane is not easy or accurately reproducible, especially in mixed dentition patients. Secondly, any change in the angulation of functional occlusal plane, caused by either tooth eruption and dental development or orthodontic intervention, can profoundly influence Wits appraisal.

Baik and Ververidou<sup>3</sup> introduced the beta angle in 2004. Though, it assesses sagittal discrepancies, it depends on points A and B, which are difficult to locate and point

- <sup>1</sup> Kavita Sachdeva, B.D.S.
- <sup>2</sup> Anil Singla, M.D.S.
- <sup>3</sup> Vivek Mahajan, M.D.S.
- <sup>4</sup> H.S. Jaj, M.D.S.
- <sup>5</sup> Vishal Seth, M.D.S.
- <sup>6</sup> Madhurima Nanda, B.D.S.

<sup>1</sup> P.G Student

<sup>2</sup> Professor and HOD

<sup>3</sup> Senior Lecturer

<sup>4</sup> Reader

<sup>5</sup> Senior Lecturer

<sup>6</sup> P.G Student

Dept of Orthodontics & Dentofacial Orthopaedics,  
Himachal Dental College, Sundernagar, H.P.

### Address For Correspondence:

Dr. Kavita Sachdeva  
Department of Orthodontics,  
Himachal Dental College,  
Sunder Nagar (H.P.)  
E-mail:kavitasachdeva1985@gmail.com  
Ph: 09816658882

**Submission :** 25<sup>th</sup> September 2011

**Accepted :** 28<sup>th</sup> April 2012

### Quick Response Code



C in condyle which is not clearly visible either. Most recently introduced sagittal dysplasia indicator is YEN angle introduced by Neela et al<sup>8</sup> (2009). Since it measures an angle between line SM and MG, rotation of jaw because of growth or orthodontic treatment can mask true basal dysplasia, similar to ANB angle.

To overcome these problems, Bhad<sup>9</sup> et al (2011) developed W-angle. It does not depend on any unstable landmarks or dental occlusion and would be especially valuable to assess true sagittal changes because of growth and orthodontic treatment. So the purpose of this study is to compare the various angles ANB angle, Wits appraisal, Beta angle, YEN angle and W-angle used to measure antero-posterior dysplasia and to find out which is the most reliable amongst them.

### Material And Method

This study was conducted in the

Department of Orthodontics and Dentofacial Orthopedics Himachal Dental College, Sundernagar. It consisted of 45 pretreatment lateral cephalograms of 10 to 25 year old individuals who had never undergone orthodontic treatment which were divided into 3 groups

**Group I** - Class I skeletal pattern group (n=15)

**Group II** - Class II skeletal pattern group (n=15)

**Group III** - Class III skeletal pattern group (n=15)

The following inclusion criteria was taken for the Class I skeletal pattern group (1) ANB angle of  $1^{\circ}$  to  $3^{\circ}$ , (2) Wits appraisal between 0 and -3 mm (3) Beta angle between  $27^{\circ}$  -  $35^{\circ}$  degrees, and (4) Yen angle between  $117^{\circ}$  -  $123^{\circ}$  (5) W-angle between  $51^{\circ}$  -  $56^{\circ}$  and pleasant profile.

The following inclusion criteria was taken for the Class II skeletal pattern group

(1) The ANB angle was above  $4^{\circ}$  (2) Wits appraisal greater than or equal to -1 mm (3) Beta angle less than  $27^{\circ}$  (4) Yen angle less than  $117^{\circ}$  (5) W-angle less than  $51^{\circ}$  and the profile had a Class II appearance.

The following inclusion criteria was taken for the Class III skeletal pattern group (1) the ANB angle was less than or equal to  $1^{\circ}$  (2) Wits appraisal less than or equal to -4 mm (3) Beta angle more than  $35^{\circ}$  (4) Yen angle more than  $123^{\circ}$  (5) W-angle more than  $56^{\circ}$  and the profile had a Class III appearance.

Then the lateral cephalograms exposed with jaws in centric relation, lips relaxed, and the head in the Natural head position. The radiographs were obtained with Planmeca X-ray machine with model no: 2002 (Fig 1). All the cephalograms were recorded with the same exposure parameters and in the same machine. These cephalograms were traced, and ANB, Wits appraisal, and Beta angle, Yen angle and W-angle were measured to find the antero-posterior dysplasia and most reliable amongst them. (Fig 2)

### Statistical Analysis

The mean, standard deviation and P value were calculated for each parameter. ANOVA analysis was performed and highly significant differences were found in Beta angle, Yen angle and W-angle in all the three Groups (Group I, Group II, and Group III) (Table I)

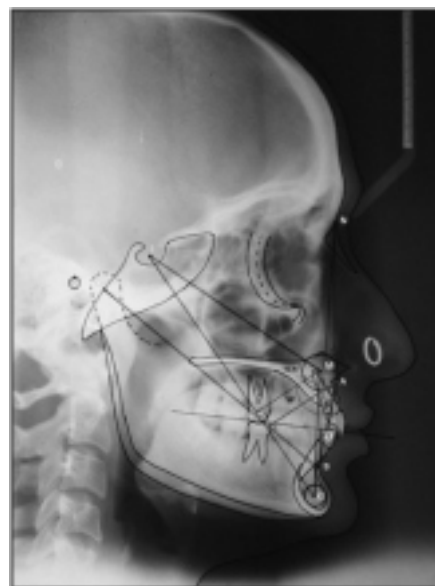


Fig 1- Planmeca X-ray machine with model no: 2002

### Discussion

Clinicians with increasing frequency are treating malocclusions in conjunction with orthognathic surgery. A method of maxillomandibular assessment that provides accurate data on this relationship at an early age would be highly desirable.<sup>5</sup> The most popular parameter for assessing the sagittal jaw relationship remains the ANB angle, but it is affected by various factors and can often be misleading.<sup>1</sup> It has been suggested that although the apical base relationships were constant in all conditions, the ANB angle became either small or large and thus such a measurement was not reliable.<sup>10,11</sup> So one must consider Bjork opinion that the human body constitutes a functional entity, no part of which can be varied

Fig 2 – Lateral Cephalogram showing ANB angle, Wits appraisal , Beta angle , Yen angle , W-angle



**ANB Angle** - Difference between SNA and SNB angle  
**Wits Appraisal** - Perpendicular lines drawn from points A and B to functional occlusal plane. The distance between AO and BO is measured.  
**Beta Angle** - Angle measured between perpendicular line drawn from point A to C-B line and A-B line  
**YEN Angle** - Angle between the SM line and the M-G line  
**W-Angle** - Angle between the perpendicular line from point M to S-G line and the M-G line

without entailing some changes in other parts. Similarly, the facial skeleton and the dentition are functional parts of the skull as a whole. It follows, therefore, that variations in the bite will be largely

Table I- Mean, Standard Deviation and p-Valve for the Three Groups

	Groups	N	Mean	Std. Deviation	p-VALUE
ANB	I	15	1.8462	1.67562	0.829
	II	15	3.2000	1.01419	
	III	15	1.5000	1.01905	
Wits Appraisal	I	15	0.8182	0.60302	0.728
	II	15	1.0000	1.09545	
	III	15	0.6000	0.89443	
Beta Angle	I	15	29.4000	3.81351	<0.001**
	II	15	25.9333	1.48645	
	III	15	35.1333	1.68466	
Yen Angle	I	15	118.733	1.16292	<0.001**
	II	15	114.666	1.04654	
	III	15	125.333	1.29099	
W Angle	I	15	52.8667	1.30201	<0.001**
	II	15	48.7333	1.03280	
	III	15	53.1333	1.08233	

\*\*Highly significant

related to cranial and facial structures."<sup>12</sup> The result of this study shows that the ANB angle values are not significant (p=0.829) among three groups. This is in favour of the study conducted by Brown<sup>13</sup>, Chang<sup>11</sup> and Jacobson<sup>1</sup>, who claimed that any change in the SN plane would affect the ANB angle. This is also supported by Rotberg et al<sup>14</sup> who also stated that nasion usually moves in anterior and slightly superior direction because of the growth increments on the cranial base plane passing through sella and nasion.

So when using the ANB angle, factors such as the patient's age, growth rotation of the jaws, vertical growth, and the length of the anterior cranial base (AP position of N) should be considered, which makes the interpretation of this angle much more complex (Jacobson, 1975)<sup>1</sup>.

Our study shows that Wits values were also non-significant (p = 0.728) among three groups. This is also supported by Moore et al<sup>15</sup> and Ishikawa et al<sup>16</sup> who also stated that Wits appraisal although not affected by landmarks or jaw rotations; it still has the problem of correctly identifying the functional occlusal plane, which can sometimes be impossible, especially in mixed dentition. Furthermore, changes of the Wits measurement throughout orthodontic treatment might also reflect changes in the functional occlusal plane rather than pure sagittal changes of the jaws.

Our study shows that Beta angle values were statistically significant (p < 0.001) among three groups. This is also supported by Biak and Ververidou<sup>3</sup> who stated that Beta angle does not depend on cranial landmarks or the functional occlusal plane and remain relatively stable even when the jaws are rotated. Another advantage of the Beta angle is that it can be used in consecutive comparisons throughout orthodontic treatment because it reflects true changes of the sagittal relationship of the jaws, which might be due to growth or orthodontic or orthognathic intervention. But it uses point A and point B, which can be remodelled by orthodontic treatment and growth.

Our study shows that Yen angle values were statistically significant (p < 0.001) among three groups. This is also supported by Neela et al<sup>8</sup> who stated that Yen angle depend on stable points S-midpoint of sella turcica, M- midpoint of

pre-maxilla and G-center of largest circle that is tangent to the internal inferior, anterior, and posterior surfaces of the mandibular symphysis and so it is not influenced by growth changes and can easily be used in mixed dentition. But since it measures an angle between line SM and MG, rotation of jaw because of growth or orthodontic treatment can mask true basal dysplasia, similar to ANB angle.

Our study shows that W- angle values were statistically significant (p < 0.001) among three groups. This is also supported Bhad et al<sup>9</sup> who stated that this measurement does not depend on unstable landmarks or the functional occlusal plane. It uses three stable points-point S, point M, and point G and the angle is measured between a perpendicular line from point M to the S-G line and M-G line. The geometry of the W angle also has the advantage to remain relatively stable even when the jaws are rotated or growing vertically this is because of rotation of the S-G line along with jaw rotation, which carries the perpendicular from point M with it. Therefore, measurement of W angle is useful sagittal parameter in skeletal patterns with clockwise or counterclockwise rotation of the jaws as well as during transitional period when vertical facial growth is taking place.

### Conclusion

It was concluded from the present study that Beta angle, Yen angle and W-angle are statistically significant angles to assess the sagittal jaw relationship between maxilla and mandible. On the other hand measurements such as ANB angle and Wits appraisal are misleading for the assessment of antero-posterior discrepancy.

### References

1. Jacobson A: The "Wits" appraisal of jaw disharmony. *Am J Orthod* 1975; 67: 125-138.
2. Moyers RE, Bookstein FL, Guire KE: The concept of pattern in craniofacial growth. *Am J Orthod* 1979; 76: 136-148
3. Baik CY, Ververidou M: A new approach of assessing sagittal discrepancies: the Beta angle. *Am J Orthod Dentofac Orthop* 2004;126:

100-105

4. Nanda R 2005: Biomechanics and esthetic strategies in clinical orthodontics. Elsevier, St. Louis. pp. 38-73
5. Nanda R, Merrill RM : Cephalometric assessment of sagittal relationship between maxilla and mandible: *Am J Orthod Dentofac Orthop* 1994;105:328-44
6. Downs WB: Variations in facial relationships: Their significance in treatment and prognosis: *Am J Orthod* 1948;34:812-823
7. Riedel RA: The relation of maxillary structures to cranium in malocclusion and in normal occlusion. *Angle Orthod* 1952;22:142-145
8. Neela PK, Mascarenhas R, Husain A: A new sagittal dysplasia indicator: the Yen angle. *World Journal of Orthodontics* 2009;10:147-151
9. Bhad WA, Nayak S and Doshi UH: A new approach of assessing sagittal dysplasia: the W angle : *European Journal of Orthodontic* 2011:1-5
10. Freeman RS : Adjusting A-N-B angles to reflect the effect of maxillary position : *Angle Orthod* 1981;51:162-71
11. Chang HP: Assessment of anteroposterior jaw relationship: *Am J Orthod Dentofac Orthop* 1987;92:117-22
12. Oktay H : A comparison of ANB, WITS, AF-BF AND APDI measurements : *Am J Orthod Dentofac Orthop* 1991;99: 122-8
13. Brown M : Eight methods of analyzing a cephalograms to establish anteroposterior skeletal discrepancy : *Br J Orthod* 1981;8:139-46
14. Rotberg S, Fried N, Kane J, Shapiro E : Predicting the " Wits appraisal from the ANB angle : *Am J Orthod* 1980;77:636-42
15. Moore RN, DuBois LM, Boice PA, Igel KA: The accuracy of measuring condyilion location. *Am J Orthod Dentofac Orthop* 1989;95: 344-347
16. Ishikawa H, Nakamura S, Hiroshi I, and Kitazawa S: Seven parameters describing anteroposterior jaw relationships: postpubertal prediction accuracy and interchangeability. *Am J Orthod Dentofac Orthop* 2000;117: 714-720

Source of Support : Nil, Conflict of Interest : None declared